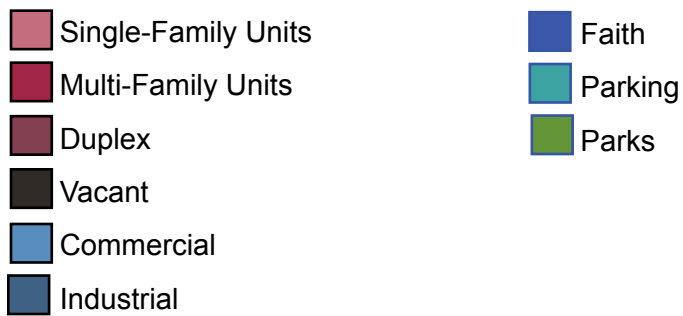


CHAPTER 8: Sherman Park Neighborhood

Sherman Park Neighborhood

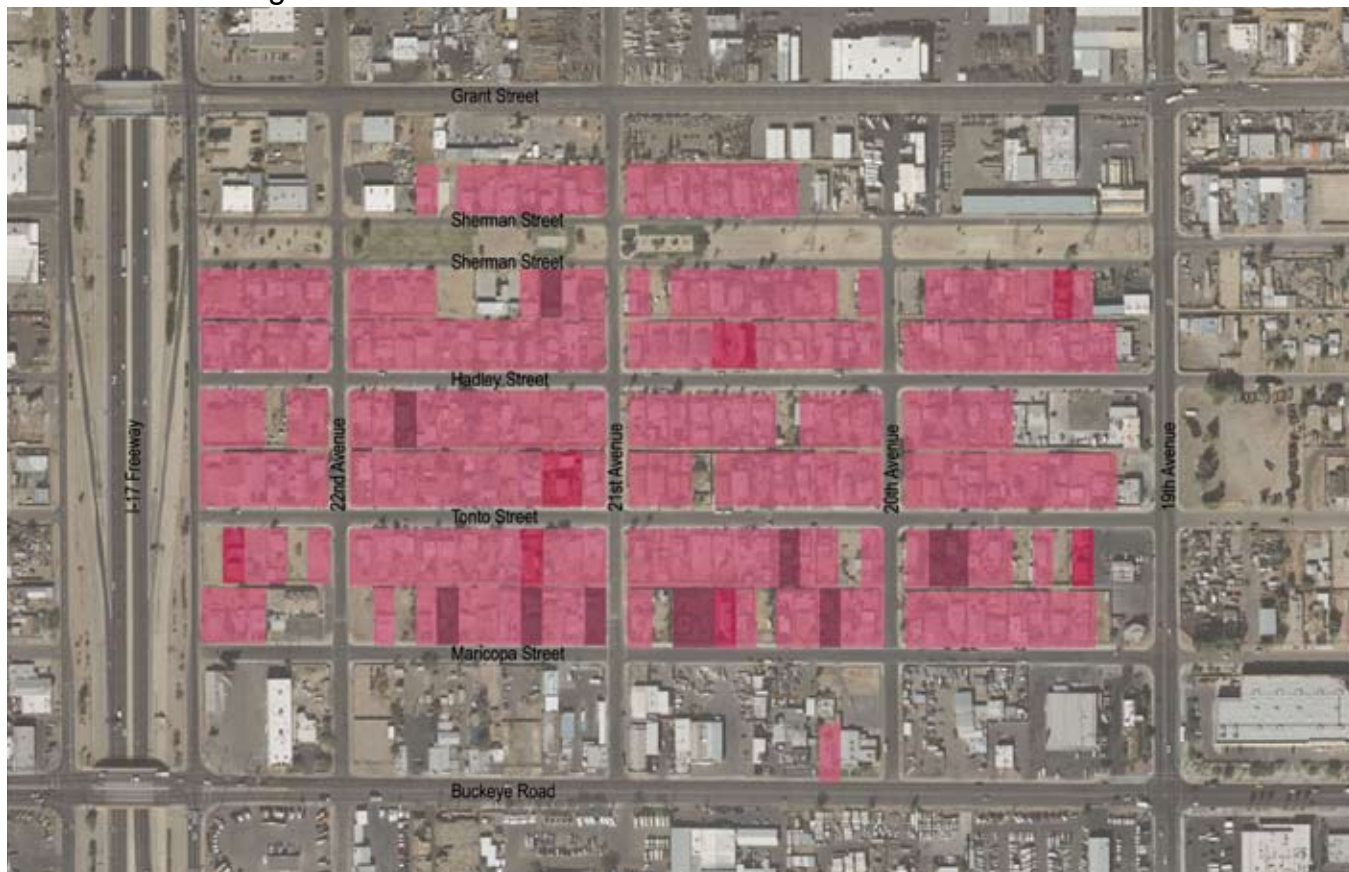


Keith E. Russell Maricopa County Assessor Map - 2008 (<http://www.maricopa.gov/Assessor/GIS/Map.html>)

Sherman Park is a small residential neighborhood that is bound by industrial, commercial sites or the I-17 Freeway on all four sides and has the well know linear park, Sherman Park.

Commercial Sites:	13	Single-Family Units:	212
Industrial Sites:	9	Duplex Units:	20
Restaurant:	3	Multi-Family Units:	~ 28
Faith/Church Sites:	4		
Parks:	1		




Sherman Park Neighborhood



Keith E. Russell Maricopa County Assessor Map - 2008 (<http://www.maricopa.gov/Assessor/GIS/Map.html>)

Total # of Parcels:

360

	Single-Family Units	(212 Parcels)	59.4% of total # of parcels
	Multi-Family Units	(7 Parcels)	1.9% of total # of parcels
	Duplex	(10 Parcels)	2.8% of total # of parcels



The housing in this neighborhood is in poor condition, in particular those areas closest to the I-17 Freeway.

Sherman Park Neighborhood



Keith E. Russell Maricopa County Assessor Map - 2008 (<http://www.maricopa.gov/Assessor/GIS/Map.html>)

Total # of Parcels:

360



Vacant

(30 Parcels)

8.4% of total # of parcels



This area does not have many vacant lots but are larger lots that remain vacant that are many times being used as outside storage.

Sherman Park Neighborhood



Keith E. Russell Maricopa County Assessor Map - 2008 (<http://www.maricopa.gov/Assessor/GIS/Map.html>)

Total # of Parcels:

360



Commercial

(60 Parcels)

16.8% of total # of parcels



Industrial

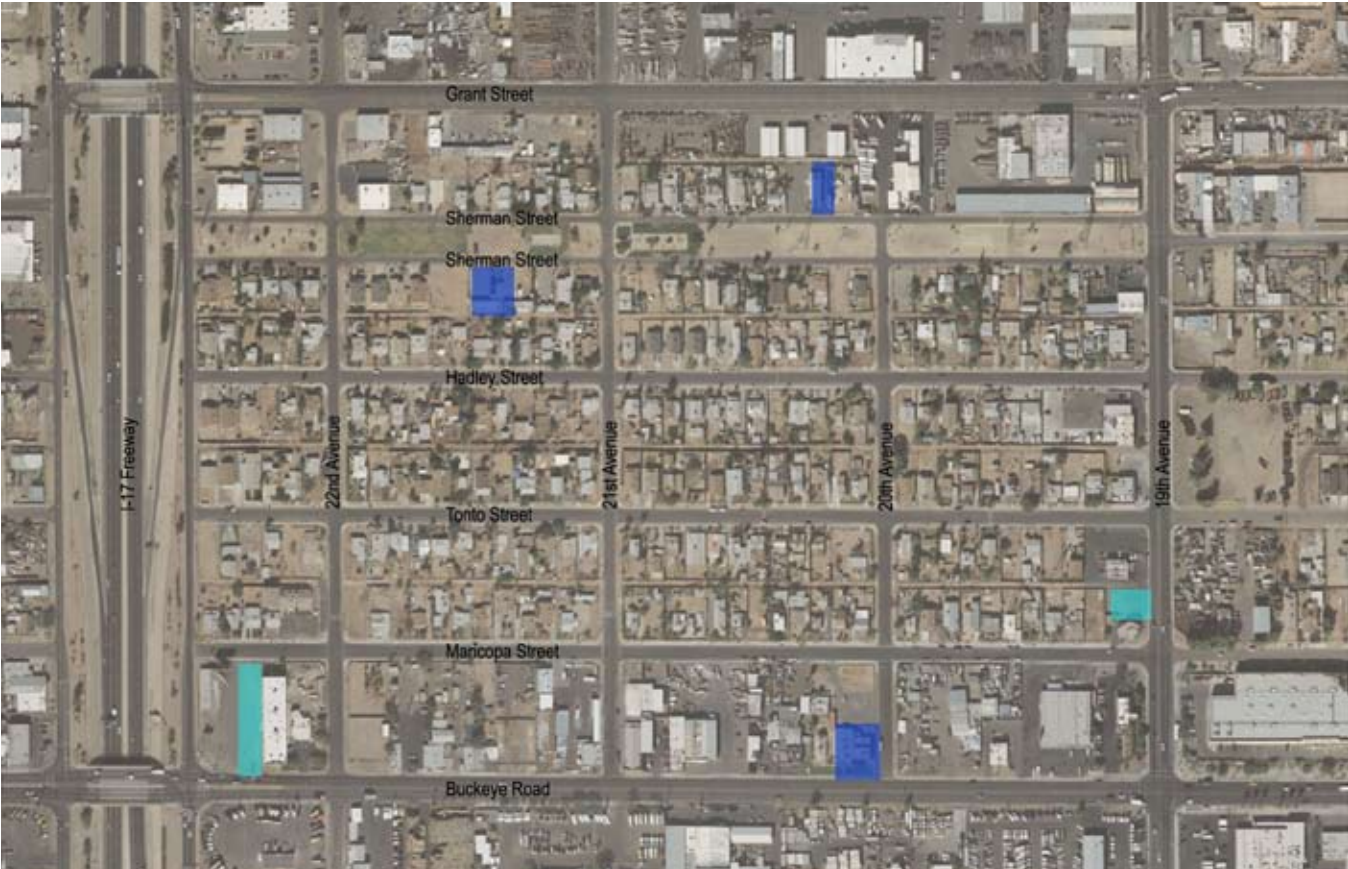
(28 Parcels)

7.8% of total # of parcels





There is a great deal of commercial and many industrial sites in this area. Primarily along Buckeye Rd.. and 19th Avenue.

Sherman Park Neighborhood



Keith E. Russell Maricopa County Assessor Map - 2008 (<http://www.maricopa.gov/Assessor/GIS/Map.html>)

Total # of Parcels:		360	
	Faith	(6 Parcels)	1.7% of total # of parcels
	Parking	(3 Parcels)	0.8% of total # of parcels



This is an example of one of the parking lots near the I-17 and Buckeye Rd. area. Very large and under used.

Sherman Park Neighborhood



Keith E. Russell Maricopa County Assessor Map - 2008 (<http://www.maricopa.gov/Assessor/GIS/Map.html>)

Total # of Parcels:

360



Parks

(4 Parcels)

0.3% of total # of parcels



This neighborhood has a very special park area. Where the APS towers are located, APS and City of Phoenix Parks and Recreation have created a small linear park for this neighborhood with basketball courts and a playground for kids to play.

Sherman Park:

Commercial (13):	BNR Shoes Web Furniture Leroy Fairey Tile Maricopa St./22nd Ave. Car Wash Auto Storage Birria de Chiva Horse Show Bar Continental Auto Parts Adela's Market Drive Thru Liquor Store Master Radiator Buckeye Rd./19th Ave. Strip Mall LLantera Aby
Restaurant (3):	Charlen Café Jack in the Box Santana's Mexican Food
Industrial (9):	Benchmart Construction: Concrete/Asphalt Sedona West Co. Inc.: Industrial Pipping Bear Distribution Group Intech Car Storage Intech Equipment Supply Scrap Metal AZ Carburetor Terrel Battery Corporation C&N Roofing Inc.
Church (4):	United Family Church Pentecostes la Roca Church Family of God Church Templo Dios es Amor
Park (1):	Sherman Park
Grocery (0):	Potential Grocery Store site