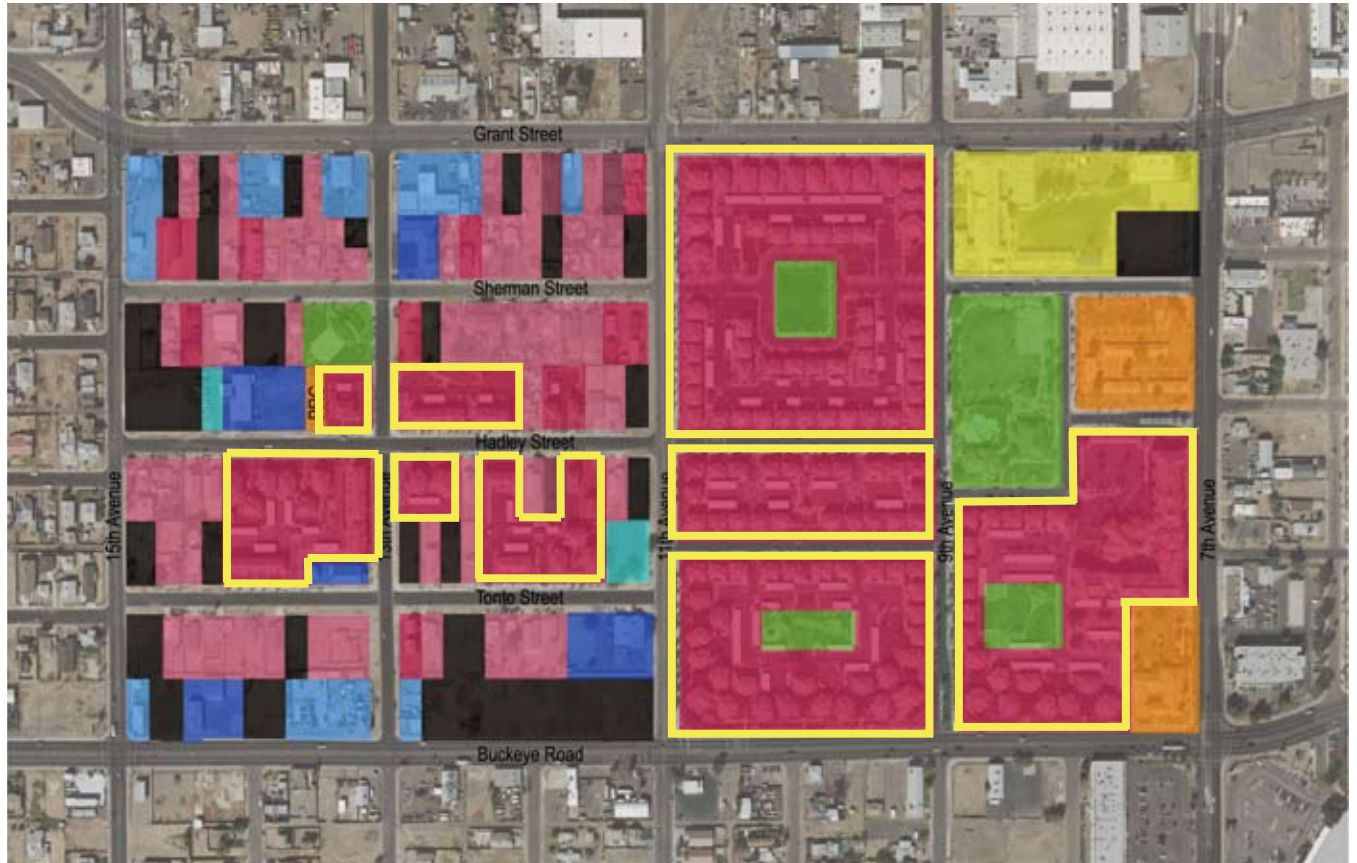
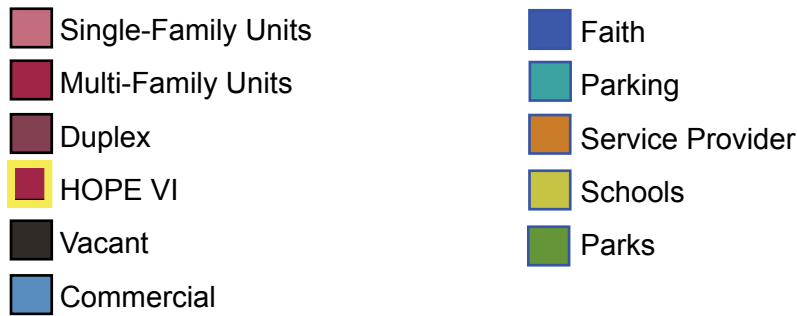


CHAPTER 4: Matthew Henson Neighborhood

Matthew Henson Neighborhood



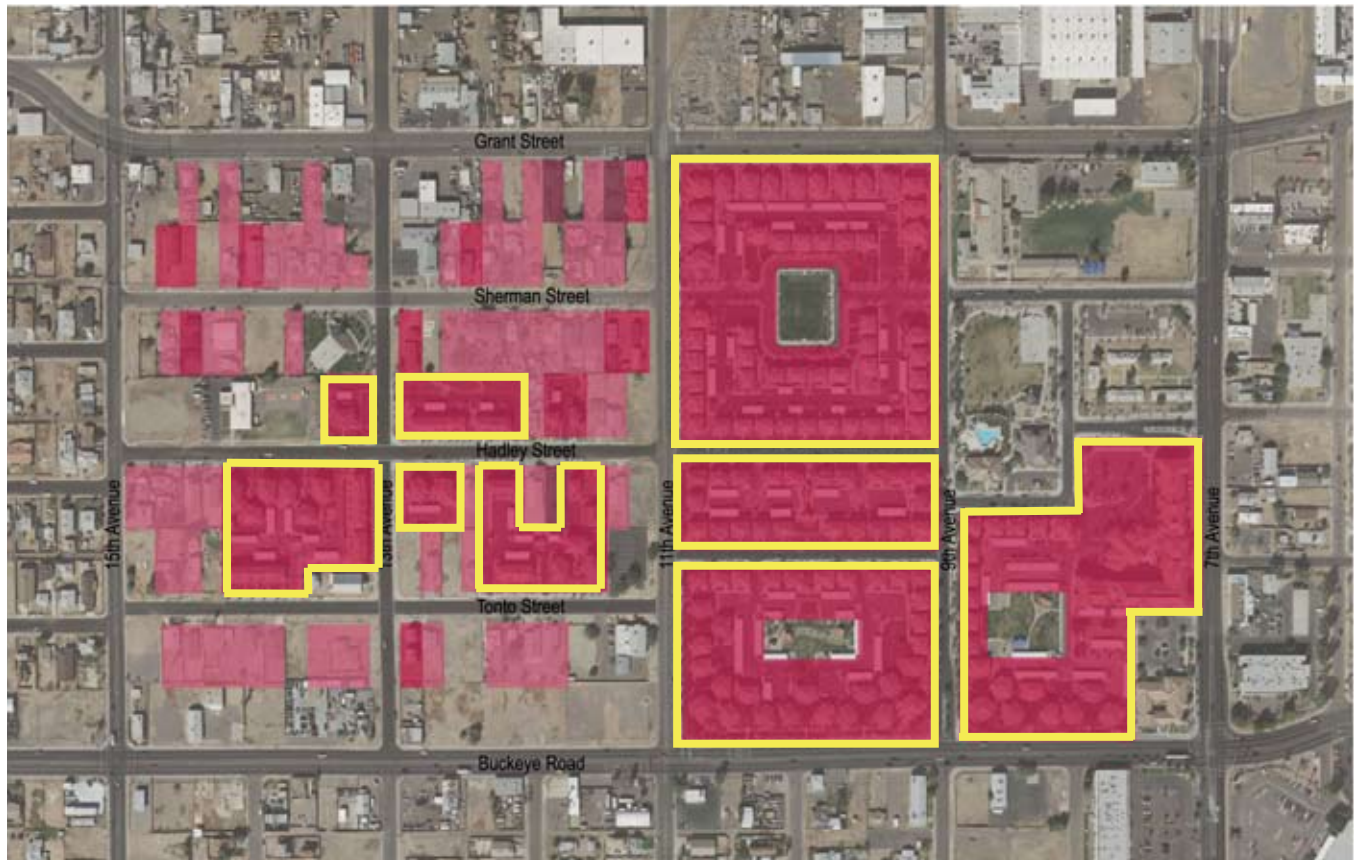
Keith E. Russell Maricopa County Assessor Map - 2008 (<http://www.maricopa.gov/Assessor/GIS/Map.html>)

The Matthew Henson Neighborhood is the one neighborhood that has seen the most changes in its community due to the construction of the HOPE VI project.

Commercial Sites:	7
Faith/Church Sites:	6
School Sites:	1
Park Sites:	5
Service Providers:	2
Single-Family Units:	57
Duplex Units:	6
Multi-Family Units:	~ 490
(Including HOPE VI units)	

Historic Property 1
Dunbar Paul Lawrence School




Matthew Henson Neighborhood



Keith E. Russell Maricopa County Assessor Map - 2008 (<http://www.maricopa.gov/Assessor/GIS/Map.html>)

Total # of Parcels:

167

	Single-Family Units	(57 Parcels)	34.1% of total # of parcels
	Multi-Family Units	(15 Parcels)	9.0% of total # of parcels
	Duplex Units	(3 Parcels)	1.8% of total # of parcels
	HOPE VI Units	(9 Parcels)	5.4% of total # of parcels



HOPE VI and Matthew Henson Senior Housing Center.

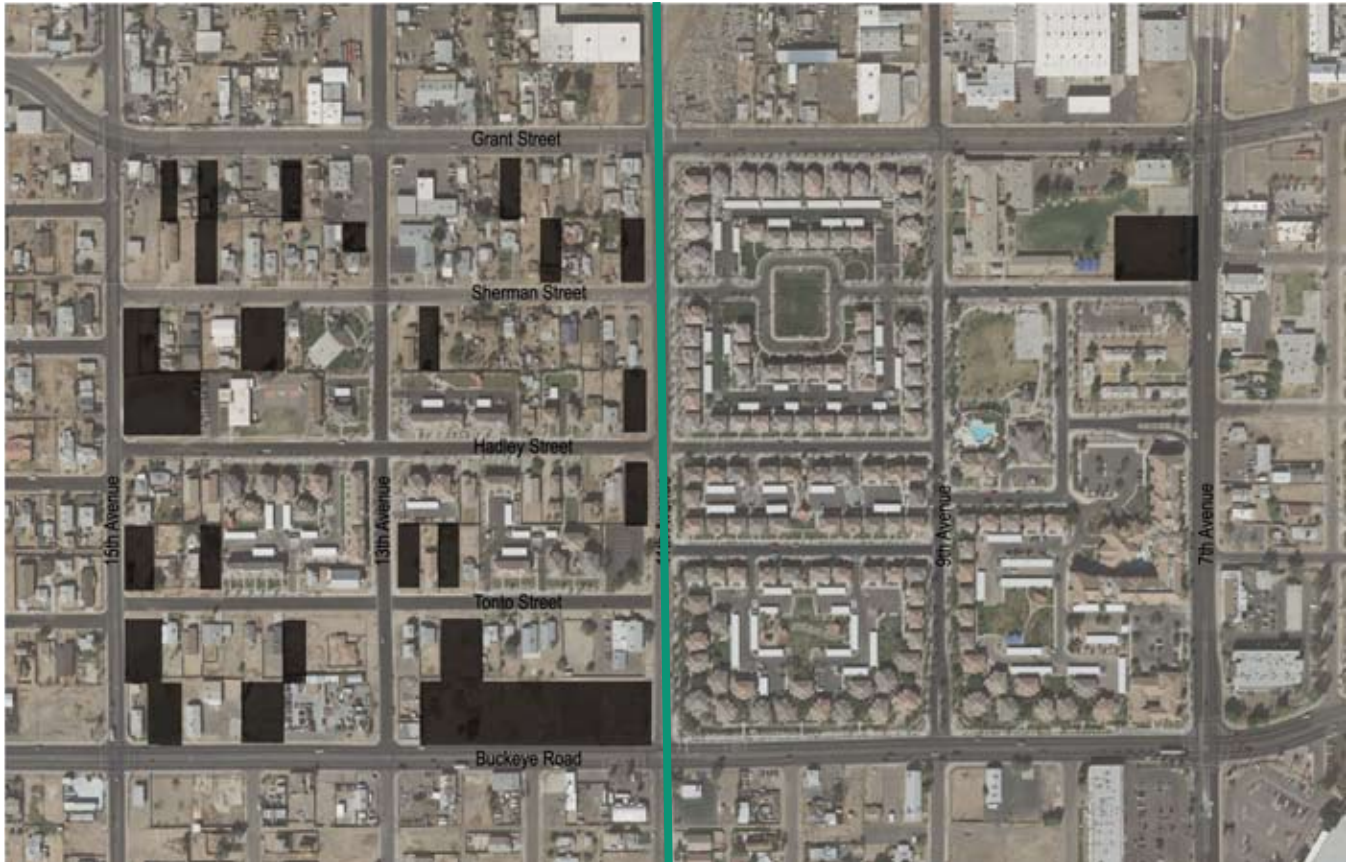


Various Single-Family Homes



Various Multi-Family Units

Matthew Henson Neighborhood



Keith E. Russell Maricopa County Assessor Map - 2008 (<http://www.maricopa.gov/Assessor/GIS/Map.html>)

Total # of Parcels: 167

Vacant (44 Parcels) 26.4% of total # of parcels

Railroad Tracks



Railroad tracks pass through the middle of the neighborhood.



Various vacant lots, many collect trash and some become shelters for the homeless population.



Matthew Henson Neighborhood



Keith E. Russell Maricopa County Assessor Map - 2008 (<http://www.maricopa.gov/Assessor/GIS/Map.html>)

Total # of Parcels:

167



Commercial

(22 Parcels)

13.2% of total # of parcels



Various small businesses are found on Grant Road and Buckeye Road.



Matthew Henson Neighborhood



Keith E. Russell Maricopa County Assessor Map - 2008 (<http://www.maricopa.gov/Assessor/GIS/Map.html>)

Total # of Parcels:

167

	Faith	(10 Parcels)	6.0% of total # of parcels
	Parking	(2 Parcels)	1.2% of total # of parcels
	Service Providers	(2 Parcels)	1.2% of total # of parcels



Various churches in this neighborhood.



Phoenix Revitalization Corporation, non-profit focused on the revitalization of CCS community



Valley Christian Center offers after school programs, food box programs and other services



Various Services Offered Through HOPE VI



Matthew Henson Neighborhood



Keith E. Russell Maricopa County Assessor Map - 2008 (<http://www.maricopa.gov/Assessor/GIS/Map.html>)

Total # of Parcels:

167

	Schools	(1 Parcel)	0.6% of total # of parcels
	Parks	(2 Parcel)	1.2% of total # of parcels



Historic Property 11:
Dunbar Paul Lawrence Elementary School (Phoenix Elementary School District.)



Various Parks as Part of the HOPE VI Project

Matthew Henson:

- Commercial (7): Life Truck Service
American Veterans Memorial Post 65
Tio's Auto Sale
Carlo's Auto Sale
Sierra Glass
Liquor Store
Dryer Store
- Church (7): Valley Christian Center
Faith Believing
Triumph in God Church
Church of Christ
Temple Wade Church
1144 W. Sherman Church (no name)
New Home Babtist Church
- Schools (1): Dunbar Elementary School -Phoenix School District (Historic Property)
- Park (5): Ninos Park
Vernell Coleman Park/Clubhouse
Henson Village Mini Parks (3)
- Serv. Providers (2): Phoenix Revitalization Corporation
Shelley's Day Care
- Multi-Family: City of Phoenix HOPE VI/Henson Village Senior Housing (129 Units)
City of Phoenix HOPE VI/Henson Village Family Housing (334 Units)