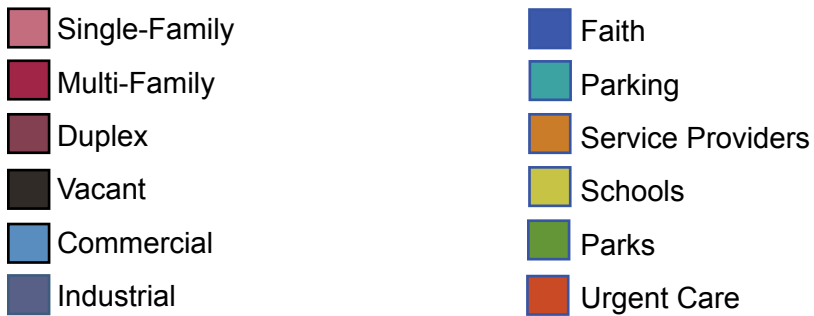


CHAPTER 3: Marcos De Niza Neighborhood

Marcos de Niza Neighborhood

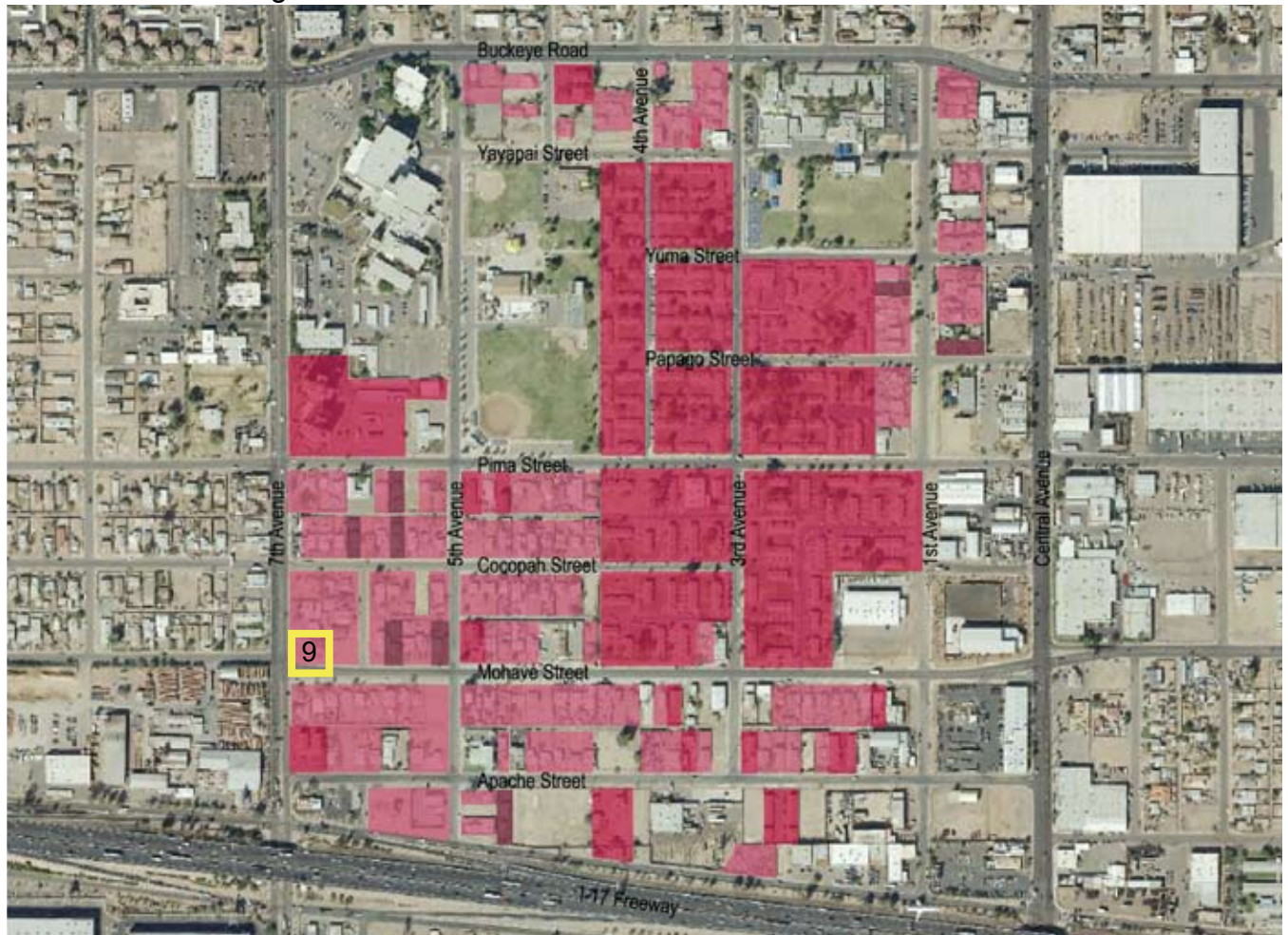


Keith E. Russell Maricopa County Assessor Map - 2008 (<http://www.maricopa.gov/Assessor/GIS/Map.html>)

Marcos de Niza houses the Marcos de Niza Public Housing project, Maricopa Integrated Health Systems' Urgent Care/Phoenix Memorial Hospital and the new Harmon Library that is under construction.

Commercial Sites:	15	Single-Family Units:	145
Industrial Sites:	14	Multi-Family Units:	~ 575
Restaurants Sites:	3	Duplex Units:	14
Faith/Church Sites:	5		
School Sites:	1		
Park Sites:	1	Historic Properties:	2
Service Provider Sites:	4	Harmon Park	
Urgent Care Sites:	1	J.B. Montgomery Homestead	

Marcos de Niza Neighborhood



Keith E. Russell Maricopa County Assessor Map - 2008 (<http://www.maricopa.gov/Assessor/GIS/Map.html>)

Total # of Parcels: 311

	Single-Family Units	(145 Sites)	46.6% of total # of parcels
	Multi-Family Units	(24 Sites)	7.7% of total # of parcels
	Duplex Units	(12 Sites)	3.9% of total # of parcels



Historic Property 9:
J.B. Montgomery Homestead



Memorial Towers: Senior
Housing Community Living



Marcos de Niza Public Housing
project.



Single-family housing conditions
varied but many were in poor
state.

Marcos de Niza Neighborhood



Keith E. Russell Maricopa County Assessor Map - 2008 (<http://www.maricopa.gov/Assessor/GIS/Map.html>)

Total # of parcels: 311

Vacant (51 Parcels) 16.4% of total # of parcels



This neighborhood has few vacant lots mostly near the industrial area closest to the freeway.

Marcos de Niza Neighborhood



Keith E. Russell Maricopa County Assessor Map - 2008 (<http://www.maricopa.gov/Assessor/GIS/Map.html>)

Total # of Parcels: 311

	Commercial	(27 Parcels)	8.7% of total # of parcels
	Industrial	(28 Parcels)	9.0% of total # of parcels

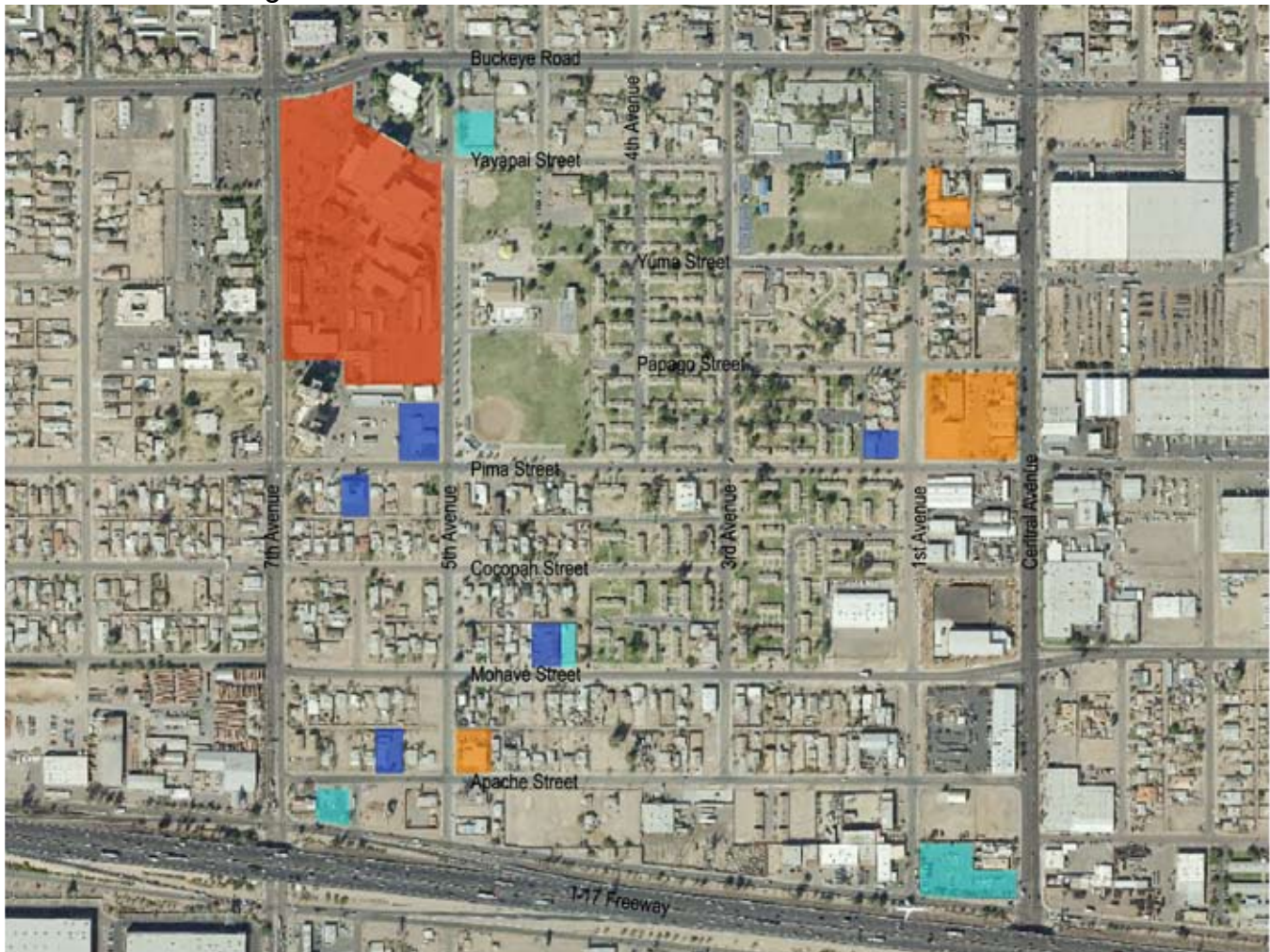


Commercial sites.



Industrial Sites along Central Avenue and the I-17 Freeway. Warehouses, an industrial pipe distributor and car depot.

Marcos de Niza Neighborhood



Keith E. Russell Maricopa County Assessor Map - 2008 (<http://www.maricopa.gov/Assessor/GIS/Map.html>)

Total # of parcels: 311

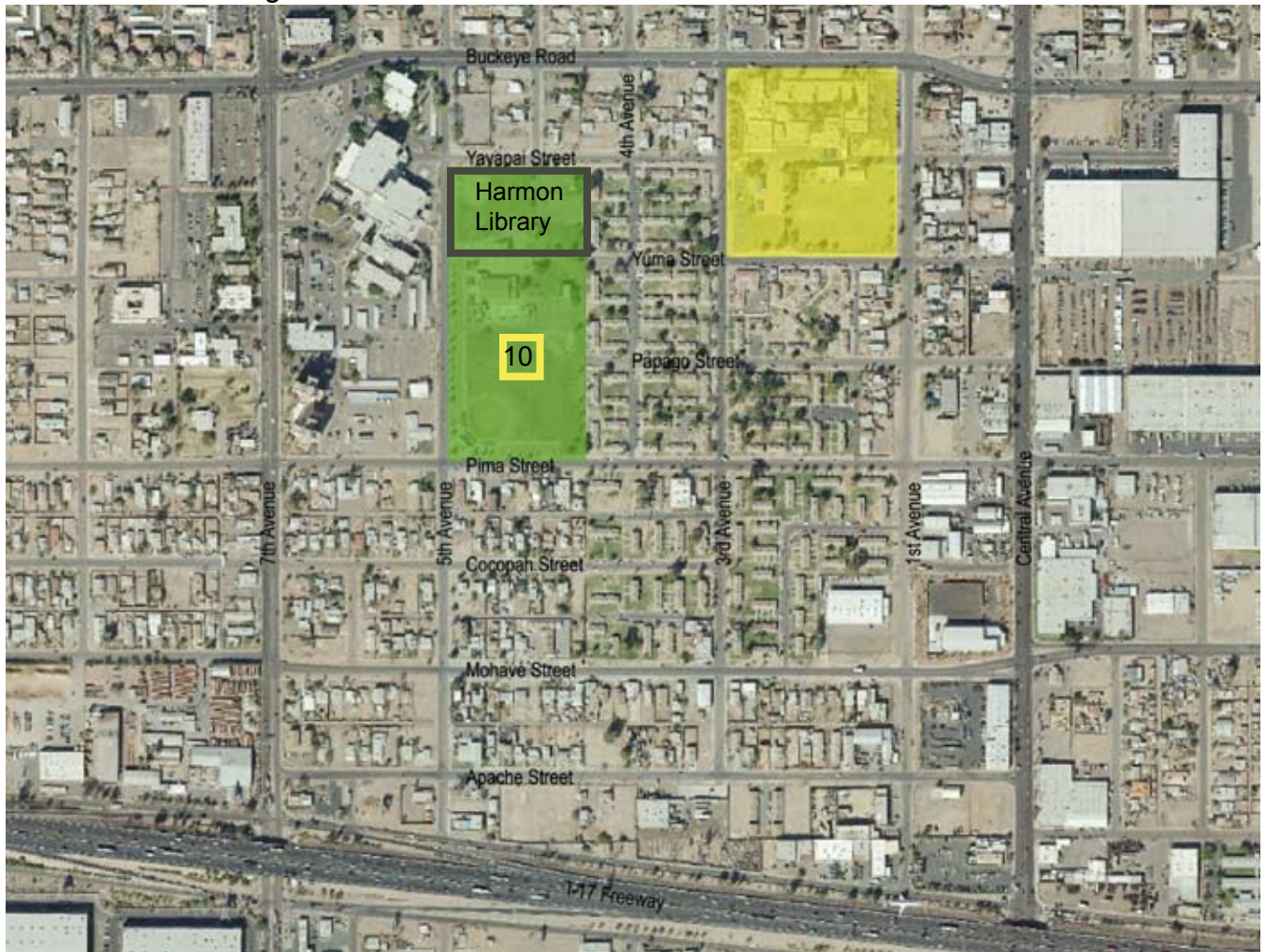
	Faith	(7 Parcels)	2.3% of total # of parcels
	Parking	(8 Parcels)	2.6% of total # of parcels
	Service Provider	(5 Parcels)	1.6% of total # of parcels
	Urgent Care	(2 Parcels)	0.6% of total # of parcels



Maricopa Integrated Health Systems' Urgent Care/Phoenix Memorial Hospital and the Fire Station are part of this neighborhood. Other service providers in the area are Chicanos por la Causa and Valle del Sol who just opened their new building.



There are many small churches in this neighborhood. This is one example, Iglesia Bautista.

Marcos de Niza Neighborhood



Keith E. Russell Maricopa County Assessor Map - 2008 (<http://www.maricopa.gov/Assessor/GIS/Map.html>)

Total # of Parcels: 311

	Schools	(1 Parcel)	0.3% of total # of parcels
	Parks	(1 Parcel)	0.3% of total # of parcels



Historic Property 10:
Harmon Park



Harmon Library old and new, part
of Harmon Park.



A+ Lowell Elementary School
(Phoenix Elementary School
District)

Marcos de Niza:

Commercial (15):	Medical Office Building Reyes Auto Sale WD Drywall LLC Contractors Dollar Store Screen Printing Mary Lou's Market Seafood Market (no longer in use) AA Group	Office Building (for lease) Hells Angels Motor Club All Out Bail Bonds Lab One Inc. Brein Holt Contracting Auto Repair Auto Resale
Industrial (14):	Thorson Keenan Industrial Pipe/Plumbing Southwest AZ Recycling Lane Award MPG Industrial Yo Ko Homa Industrial Contractors Planet Recycling: Carpet Supplies World Wheel Inc. Apache Redemption and Electronics INC Universal Fog Indwell The AZ Auctioneers Car Depot Mikes Place Enviro-Stripping The Roy Houff Co. Flourist	
Restaurants (3):	Armando's Mexican Food Lo-Lo's Chicken Waffles Comedor Guadalajara	
Urgent Care (1):	Maricopa Integrated Health Systems Urgent Care/Phoenix Memorial Hospital	
Churches (5):	Iglesia Bautista 517 W. Pima Church (no name) Iglesia Centro Greater New Zion Church Sendero de la Cruz Community Church	
Schools (1):	Lowell School Elementary (Phoenix Elementary School District)	
Park (1):	Harmon Park/Pool (Historic Property) Harmon Library	
Serv. Providers (5):	Marcos de Niza Senior Center Fire Station Valle Del Sol (new construction) Chicanos por la Causa Tobey House (under construction)	
Single-Family:	J.B. Montgomery Homestead (Historical Site/Potential future office space)	
Multi-Family:	Memorial Towers: Senior Housing Community Living (153 Units) City of Phoenix Marcos de Niza Public Housing (374 Units) West Pima Villas (3 units - for rent)	